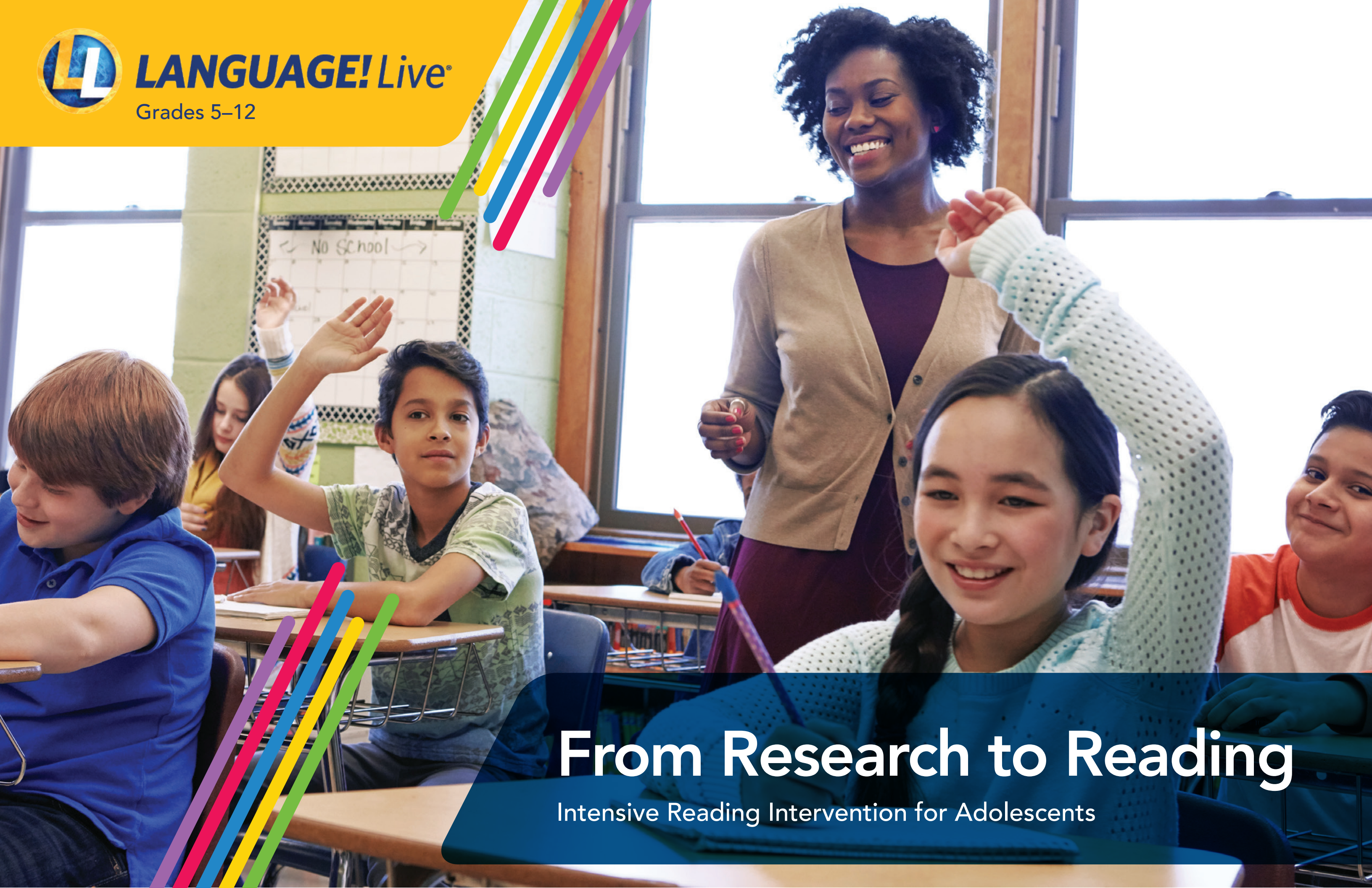




LANGUAGE! Live

Grades 5–12



From Research to Reading

Intensive Reading Intervention for Adolescents

69%

of U.S. eighth-grade students are at or below basic reading levels.¹

Many students struggle with grade-level text and, for some, they can't read well enough to navigate a typical classroom.²

By the time they reach middle and high school, adolescent struggling readers begin to doubt their ability to ever read.

“Reading. You need it. It’s the most important thing in life. Without reading, you can’t do anything.”

—Malachi,
LANGUAGE! Live Student



Believe literacy is possible.



Yet, experts have proven

95%

of all children can be taught to read.³



LANGUAGE! Live® is the intensive intervention adolescent students need to reach literacy success.

¹nationsreportcard.gov/reading/nation/achievement/?grade=8.

²Teaching Adolescents to Read: It's Not Too Late, Louisa Moats, Ed.D.

³aft.org/sites/default/files/moats.pdf



Instill the
confidence
to grow.



The Right Solution for Your Students

LANGUAGE! Live is a comprehensive literacy intervention for students in grades 5–12 that practically applies research about literacy and adolescent learning within a systematic and effective program.

By using a blended approach, **LANGUAGE! Live instruction simultaneously reinforces the literacy foundations students need while strategically engaging students** with authentic text to accelerate them to grade-level proficiency.



EVIDENCE-BASED

- Uses a Structured Literacy approach founded in the science of reading
- Developed by literacy expert Dr. Louisa Moats
- Covers all strands of literacy



AGE-APPROPRIATE CONTENT

- Engages your adolescent reader
- Incorporates authentic, grade-level text
- Develops confidence and motivates
- Includes thought-provoking topics that matter most to adolescents
- Provides private foundational skills training and practice



EFFECTIVE

- Harnesses the power of technology in a blended model with online and teacher-guided instruction
- Enhances teacher effectiveness through direct, explicit instruction
- Differentiates with purpose



The Power of *Blended Instruction*

LANGUAGE! Live includes two main components, **Word Training** and **Text Training**, delivered through a blend of teacher-guided and online instruction and practice. This powerful combination creates pathways for automatic word and text reading while simultaneously and strategically developing advanced literacy skills to gain meaning from text structure, and build critical skills for writing.



Author of *LANGUAGE! Live*

Louisa Moats, Ed.D., lead author of *LANGUAGE! Live* and LETRS® (Language Essentials for Teachers of Reading and Spelling) professional development is a nationally recognized authority on literacy education and is widely acclaimed as a researcher, speaker, consultant, and trainer.

She received her doctorate in reading and human development from the Harvard Graduate School of Education and is widely published on reading instruction, the professional development of teachers, and the relationship between language, reading, and spelling.

Louisa Moats, Ed.D.
AUTHOR • LITERACY EXPERT

Teacher-Guided Instruction

Through teacher-guided instruction, students engage in the Text Training component of the program that focuses on helping students comprehend what they read and write. **This component scaffolds and reinforces grade-level expectations while the teacher delivers explicit instruction and students interact with engaging topics.**



Online Instruction and Practice

Online instruction and practice includes both Word Training and Text Training and focuses on instruction critical to foundational literacy skills. **It provides students an opportunity to move at their own pace. The teacher can then use reports to make assignments at critical junctures in a student's learning path.**



Teaching students to read is science.

Students at least two years behind in their reading skills lack foundational literacy and have difficulty accessing grade-level text. *LANGUAGE! Live* supports secondary teachers with the science to teach reading effectively, everything from phonics and grammar to comprehension and writing.



“Every year that I use this program, I see tremendous growth in each and every student. Their self-esteem and confidence regarding reading simply goes through the roof.”

—Cassie Prater, Teacher

Two Instructional Experiences to Ensure a Skilled Reader

LANGUAGE! Live embodies Scarborough’s Reading Rope with two unique instructional experiences that blend online and teacher-guided instruction.

Text Training focuses on language comprehension skills while **Word Training** addresses word recognition skills. Together, these components of *LANGUAGE! Live* give students a comprehensive literacy experience.

LANGUAGE COMPREHENSION

Background Knowledge

facts, concepts, etc.

Vocabulary

breadth, precision, links, etc.

Language Structures

syntax, semantics, etc.

Verbal Reasoning

inference, metaphor, etc.

Literacy Knowledge

print concepts, genres, etc.

WORD RECOGNITION

Phonological Awareness

syllables, phonemes, etc.

Decoding

alphabetic principle, spelling-sound correspondence

Sight Recognition

of familiar words

The Science of Reading

LANGUAGE! Live follows the Structured Literacy approach based on the science of reading and endorsed by the International Dyslexia Association®. It uses explicit, systematic, and cumulative instruction in the essential elements of literacy and is critical to ensuring student success in learning to read.



SKILLED READING

Fluent execution and coordination of language comprehension and word recognition.

Adapted from Scarborough, 2001

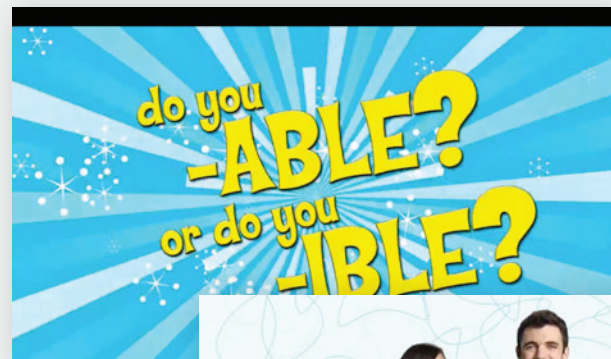
Founded by acclaimed researcher Hollis Scarborough, this rope metaphor embodies the evidence-based skills necessary to become a proficient reader.

Designed for Adolescents

Learning to read doesn't have to be elementary.

LANGUAGE! Live has age-appropriate programming and features designed to captivate and engage adolescent readers, **creating opportunities for students to build CONFIDENCE in themselves as they build knowledge and skills.** *LANGUAGE! Live* is best suited for struggling adolescent learners. They may be a student who:

- Has some success with foundational skills but may be discouraged.
- Performs well on oral-comprehension measures when reading is not required.
- Has difficulty reading vocabulary words by sight.
- Is unable to decode longer words and has poor spelling.
- Is an English language learner who needs additional support.
- Is a student with special needs.



Humorous skits reinforce instructional lessons and support engagement. Students are able to track their progress, supporting self-reflection.



The **Class Wall** allows teachers and students to communicate with each other and/or initiate collaborative discussions online.



Students are given opportunities for self-expression through **customizable avatars**. As students complete activities, they earn rewards and unlock additional customizations.

Teacher-Guided Instruction

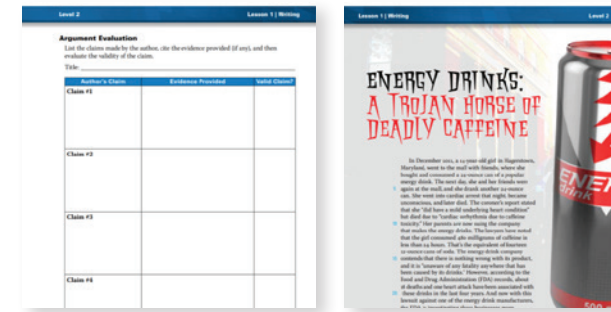
Teacher-Guided Instruction, referred to as Text Training, leverages the power of the teacher to guide students in close reading of challenging, age-appropriate text and provides resources to reinforce and extend student learning.

Teachers can focus on details essential to comprehension, critical thinking, and the connection between reading and writing. Text Training also provides additional practice with these critical skills and creates opportunities for teachers and students to interact and make meaning.

BASED ON A FOUR-PART UNIT DESIGN

- 1 Vocabulary
- 2 Grammar
- 3 Reading Comprehension
- 4 Writing

The lessons spiral in difficulty as instruction in the unit advances with multiple opportunities for practice. The content in all four strands is interwoven into coherent, systematic instruction.



WRITING PROJECTS

In addition to embedded writing instruction, optional Writing Projects include opportunities for students to collaborate, practice speaking and listening, presentation, and research skills.

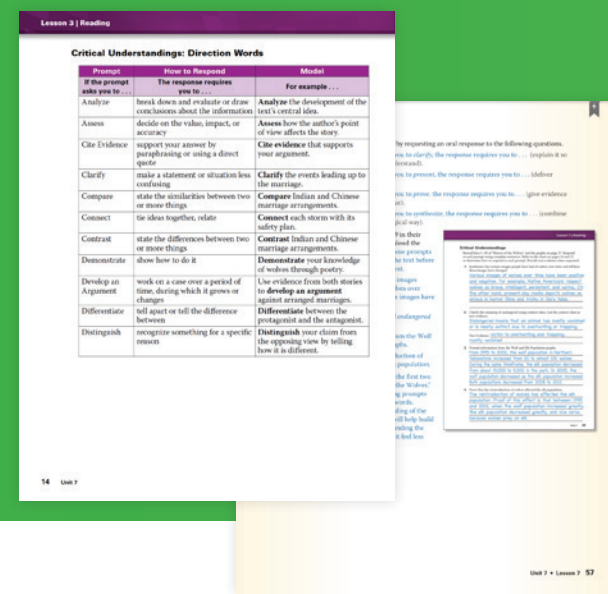
REAL-WORLD, AGE-APPROPRIATE TEXTS

Real-life topics encourage thoughtful exploration of the world. Students read texts about the topics they care about—such as music, environmental pollution, and censorship. Students also read a variety of literary titles often found in secondary classes.



WHAT DO LESSONS LOOK LIKE?

Vocabulary, Grammar, Reading Comprehension, and Writing strands focus on advanced literacy skills to develop strategic thinking for comprehension.



UNIT OPENERS

In every unit, all instructional text is connected to a common theme. The Unit Opener videos provide engaging exposure to the theme to build background knowledge.



Individualized Instruction with Purpose

LANGUAGE! Live includes reliable, effective measures for each student to assist in planning instruction, determining grouping strategy, differentiating instruction, and measuring effectiveness through progress monitoring.

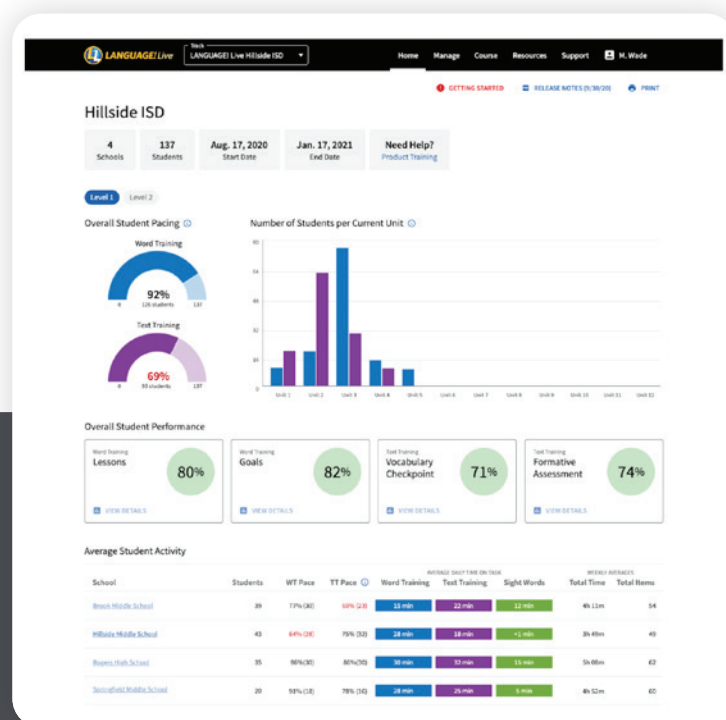


Data and Assessment

LANGUAGE! Live contains a variety of assessments including benchmark assessments, formative assessments, end-of-unit assessments, and more.

Performance on these assessments enable educators to:

- Determine initial placement
- Monitor progress and growth
- Measure comprehension, fluency, and spelling
- Refine and differentiate instructional activities
- Evaluate skill mastery
- Track performance and pacing



District/School leaders and teachers can track progress and pacing through a detailed dashboard or view robust reports.

Differentiation

LANGUAGE! Live empowers educators to respond to their students and modify instruction as needed. *LANGUAGE! Live* includes opportunities for teachers to assign additional practice or assign optional enrichment activities like writing projects.



WORD TRAINING

- Fluency Checks with recording features measure students' fluency progress and give teachers an opportunity to provide feedback.
- Word Training activities are reassigned when additional practice is needed.

TEXT TRAINING

- Reteach lessons located in the online resources provide opportunities for additional instruction.
- Practice Activities align with instruction and provide feedback so students can continue to learn.
- Power Pass gives students an opportunity to apply knowledge to questions that are similar to those asked on high-stakes tests.
- Content Mastery Practice allows students to check their own learning.

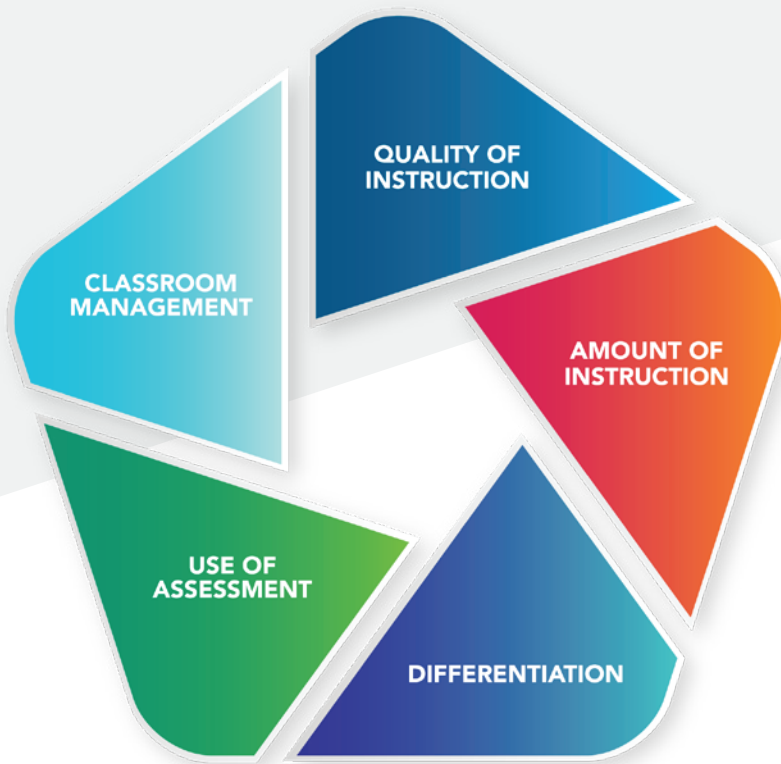
Customer Success



Expert Support for Implementation Success

Voyager Sopris Learning® can partner with you throughout your *LANGUAGE! Live* journey, with options including:

- On-demand online launch training
- Resources to support implementation fidelity
- In-person and virtual trainings
- Guidance for district leaders and coaches
- In-classroom team teaching and lesson modeling to build local capacity
- Remote or onsite Professional Learning Community facilitation



FIVE KEYS TO SUCCESS

Almost 2 Years Growth in One Year

With *LANGUAGE! Live*, a good implementation equals good results. *LANGUAGE! Live* has been proven effective in classrooms across the country, with students gaining an average of almost two years of growth in one academic year.

*Gains based on 45-90 minutes of daily instruction and students completing six to seven units of instruction.



STUDENTS GAINED **TWO YEARS (1.9) GROWTH** IN ONE ACADEMIC YEAR

“My first (benchmark assessment) was 480. My next one was 900-something. I freaked out.”

—Walter, *LANGUAGE! Live* Student



Ready to increase reading engagement and achievement?

Literacy is Life Changing

When students are strong readers, it improves their overall ability in every other class and opens opportunities to enhance their lives with better college educations, careers, and more. It is the key to unlocking better grades, better pay, and, for districts, better student outcomes.

Learn more by visiting,
voyagersopris.com/languagelive



//CODiE//
2024 SIIA CODiE FINALIST



voyagersopris.com/languagelive | 800.547.6747

